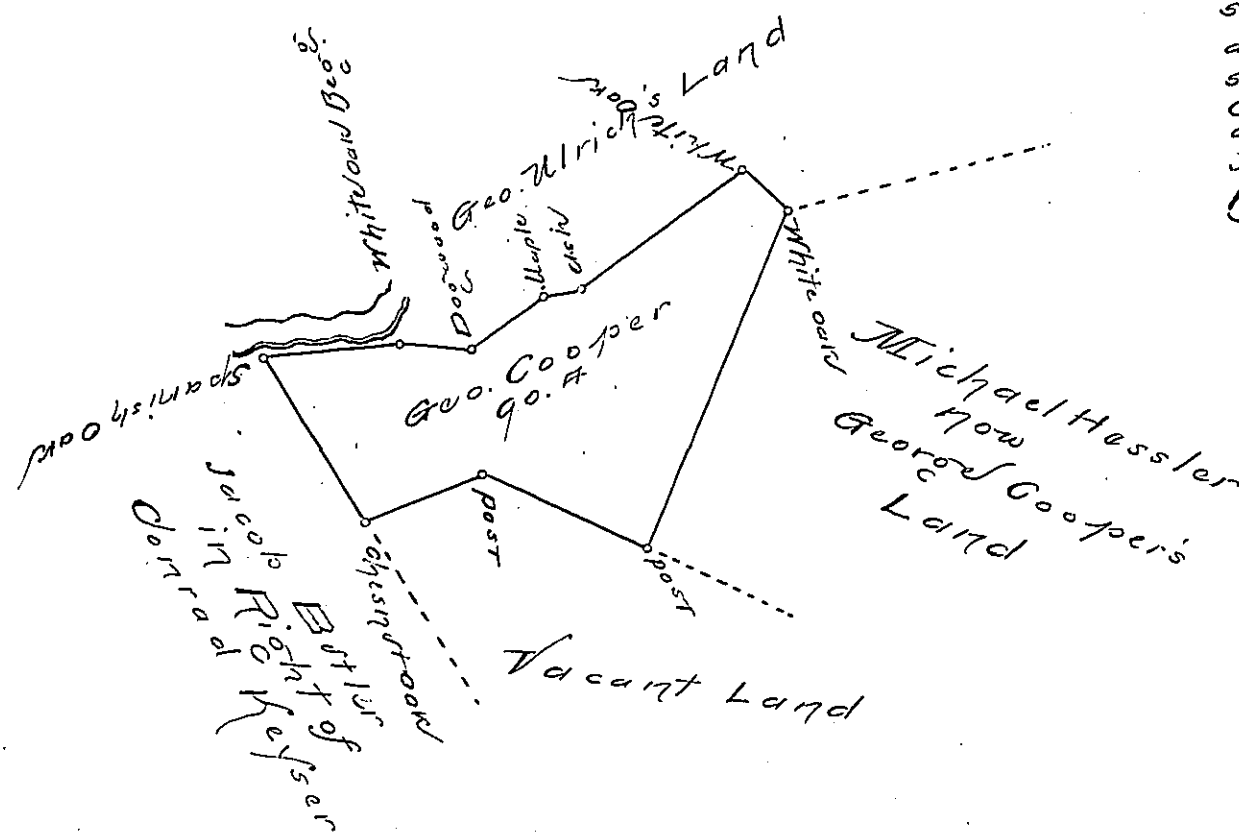


245
 Courses & Distances
 Begin White Oak &
 by George Ulrich
 N. 20 W. 30 Dogwood
 N. 59 W. 37 Maple
 N. 35 W. 17 Elm
 N. 59 W. 86 White Oak
 N. 20 E. 24 White Oak
 and by George Cooper
 East 15 1/2 Post & by
 Vacant
 South 7 1/2 Post
 S. 45 E. 52 Chesn. Oak
 and by Conrad Keyser
 S. 34 W. 82 to Spanish
 Oak on Penn's Creek
 and up the same
 N. 26 W. 60 to the
 Beginning



"The Draught of a Tract of Land called
 'The Skinners Hall' Situate in Buffalo
 Township Northumberland County
 containing Ninety Acres Sixty - Perches
 with the usual Allowance proportionate to
 six - Plent for Roads.

Survey'd the 26th day of November Anno
 Dom 1773 In Pursuance of an ~~and~~ Warrant
 from the Honble Proprietaries to George Cooper
 Bearing date at Philad^a the 26th day of October
 Anno Domi. 1773
 To John Lukens Esq^r } J. Wm. Maday
 of Pennsylvania

IN TESTIMONY that the above is a copy of the original remaining on file in the
 Department of Internal Affairs of Pennsylvania, made con-
 formably to an Act of Assembly approved the 16th day of
 February, 1833, I have hereunto set my Hand and caused
 the Seal of said Department to be affixed at Harrisburg, this
 — seventh — day of — April — 1896.

James W. Fetter
 Secretary of Internal Affairs.